

The pride of Wajima, the home of lacquer, a museum specializing in lacquer art.

Wajima Museum of Lacquer Art

Wajima, Ishikawa

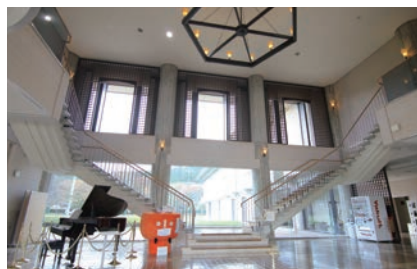
The Wajima Museum of Lacquer Art is one of the few museums in Japan that specializes in lacquer art. Lacquerware is one of Japan's most prestigious crafts. Wajima City is famous for the production of Wajima-nuri, Japan's premier lacquerware. The exterior of the building has a distinctive design reminiscent of a Shōkōin schoolhouse, and the spacious, open-ceilinged interior is decorated with lacquer. Visitors can watch a video introducing the lacquerware production process and the world of lacquerware artists, as well as

freely browse through a wide range of books on lacquerware and art. In addition to seasonal exhibitions, the museum also introduces the history and culture of Wajima-nuri.

Experience program

Learn about Wajima-nuri and its production from a living national treasure who lives in Wajima. It takes about 2 hours.

Fee: 30,000 yen per group (1 to 5 people)



Try your hand at creating traditional Noto-jofu linen. A truly hands-on museum which ensures he techniques are passed down.

Notojofu Hall

Nakanoto-machi, Ishikawa

Noto Jofu is a hand-woven fabric using hemp yarn and is characterized by its lightness and airiness, as well as its smooth texture and fine Kasuri patterns. It is said to have originated around 200 years ago when a princess of the Emperor Sujin stayed in the current Noto area of Nakanoto Town and taught the weavers here how to weave. Later, during the Edo period (1603-1868), craftsmen were invited from Omi (now Shiga Prefecture) to teach their weaving techniques. The area developed further, becoming the top

producer of hemp fabrics in Japan in the early Showa period (1926-1989).

Inside the facility, visitors can observe the Noto Jofu production process. Being able to see the intricate techniques and the various tools used in the production process up close is an interesting experience.

Experience program

Noto Jofu weaving experience Price: 30cm

(white thread 1,600yen, 2 colors 1,700yen)

70cm (white thread 3,200yen, 2 colors 3,400yen)

